

# STATE OF OUR SCHOOLS SURVEY RESULTS

SURVEY OF  
VICTORIAN PUBLIC  
SCHOOL STAFF

**10,831** teachers, principals and  
education support staff  
responded

## UNPAID OVERTIME



**TEACHERS**  
are working an average

**53**

**HOURS PER WEEK**  
**THAT'S 15 HOURS** of  
unpaid overtime



**63%**

of classroom-based ES do  
**NOT HAVE ENOUGH TIME** for  
preparation and collaboration  
to **SUPPORT STUDENTS**

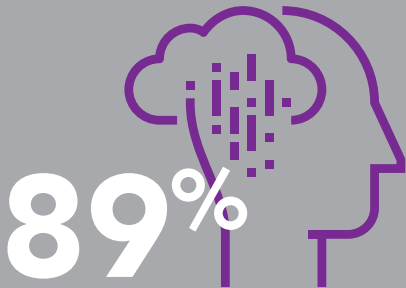


**PRINCIPALS**  
are working almost

**60**

**HOURS PER WEEK**  
on average

## WORK-RELATED STRESS



**89%**

of teachers, principals  
and ES staff experienced  
an **INCREASE** in **WORK-  
RELATED STRESS**  
over the past year



**EXCESSIVE  
WORKLOADS**

are the main cause of  
**INCREASED STRESS**  
for school staff

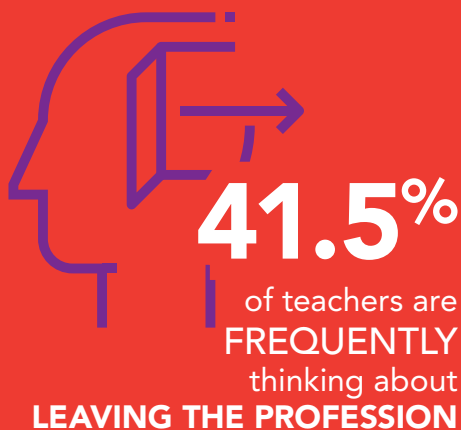
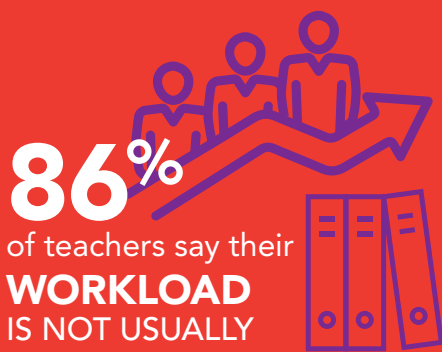
**NOT A MEMBER?  
VISIT**

[www.aeuvic.asn.au/join](http://www.aeuvic.asn.au/join)  
or scan the code



# STATE OF OUR SCHOOLS SURVEY RESULTS

## TEACHERS



## PRINCIPALS



Almost **70**  
**PER CENT**  
of principals say their school is **SIGNIFICANTLY UNDER-RESOURCED**



**60**  
**PER CENT**  
of ES have seen an **INCREASED WORKLOAD** in the past year

## EDUCATION SUPPORT

**60**  
**PER CENT**  
of ES have seen an **INCREASED WORKLOAD** in the past year



**NOT A MEMBER? VISIT**

[www.aeuvic.asn.au/join](http://www.aeuvic.asn.au/join)  
or scan the code

